



UL Verification Services Inc.
7036 Snowdrift Road
Allentown, PA 18106
610-774-1300



Indoor Distribution Test Report

Relevant Standards
IES LM-79-2008, ANSI C82.77-2002

Prepared For
Rosco Laboratories Inc
52 Harbor View Ave
Stamford, CT 06902-5914
United States

Catalog Number
SL1 MIX with dome: LEDs tuned to 3200K
Order Number
12451557
Test Number
12451557.17

Test Date

2018-08-10

Prepared By

Cordaryl Cousar, Technician

Approved By

Kevin Rodriguez, Project Handler

The results contained in this report pertain only to the tested sample.
This report shall not be reproduced, except in full, without written approval of Underwriters Laboratories.
This report must not be used by the client to claim product certification, approval, or endorsement by
NVLAP, NIST, or any agency of the Federal Government.



Luminaire Description: Black formed aluminum housing, frosted plastic lens enclosure
Lamp: 576 white/colored LEDs
Mounting: Surface – Ceiling
Ballast/Driver: One Mean Well GST220A24-R7B

Luminaire



Luminaire Characteristics

Luminous Length: 44.00 in.
Luminous Width: 8.000 in.
Luminous Height: 2.00 in.

Summary of Results

Total Luminaire Output: 13390 Lumens
Luminaire Efficacy: 72.7 lm/w
Maximum Candela: 3683 Candela

Test Conditions

Test Temperature: 25.1 °C
Voltage: 120.0 VAC
Current: 1.551 A
Power: 184.3 W
Power Factor: 0.990
Frequency: 60 Hz
Current THD: 10.9 %

Laboratory results may not be representative of field performance
Ballast factors have not been applied



Distribution - Goniophotometer

Distribution Test Conditions

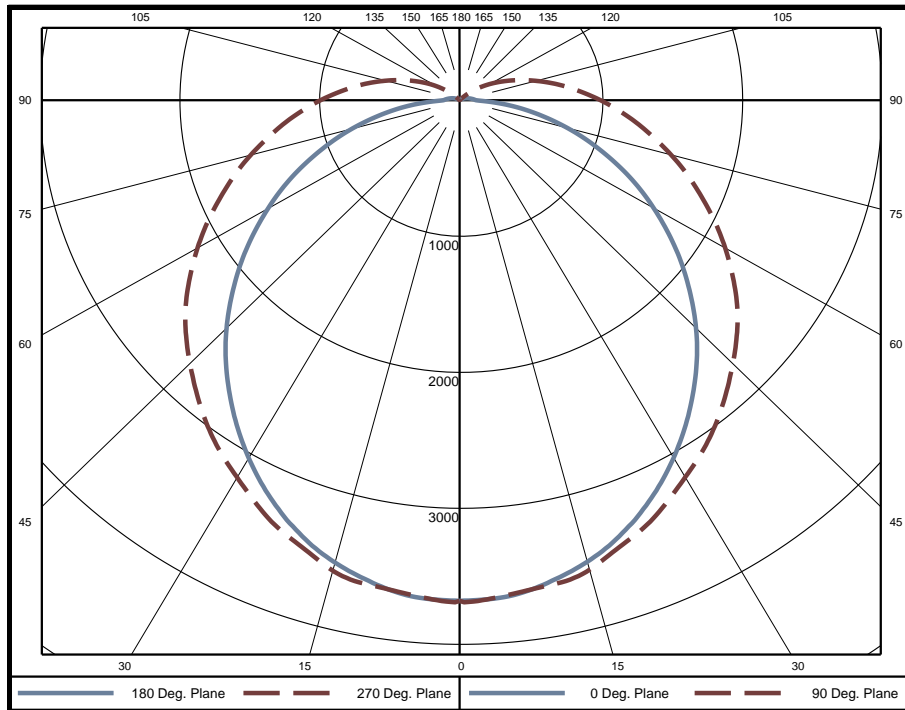
Temperature	Voltage	Current	Power	Power Factor	Frequency	Current THD
25.1 °C	120.0 VAC	1.551 A	184.3 W	0.990	60 Hz	10.9 %

Summary of Results

Spacing Criteria
 0-180: 1.23
 90-270: 1.30

Total Lumen Output: 13390 Lumens
Luminaire Efficacy: 72.7 lm/w
Maximum Candela: 3683 Candela

Polar Plot



Zonal Lumen Summary

Zone	Lumens	% of Luminaire	Zone	Lumens	% of Luminaire	Zone	Lumens	% of Luminaire
0-5	87.5	0.7%	60-65	853.4	6.4%	120-125	31.3	0.2%
5-10	259.3	1.9%	65-70	773.5	5.8%	125-130	14.1	0.1%
10-15	422.9	3.2%	70-75	684.2	5.1%	130-135	4.1	0.0%
15-20	571.5	4.3%	75-80	587.7	4.4%	135-140	0.4	0.0%
20-25	700.6	5.2%	80-85	492.8	3.7%	140-145	0	0.0%
25-30	805.7	6.0%	85-90	399.8	3.0%	145-150	0	0.0%
30-35	887.7	6.6%	90-95	319.3	2.4%	150-155	0	0.0%
35-40	944.8	7.1%	95-100	250.1	1.9%	155-160	0	0.0%
40-45	976.0	7.3%	100-105	187.5	1.4%	160-165	0	0.0%
45-50	981.4	7.3%	105-110	133.4	1.0%	165-170	0	0.0%
50-55	962.2	7.2%	110-115	89.7	0.7%	170-175	0	0.0%
55-60	917.3	6.9%	115-120	56.6	0.4%	175-180	0	0.0%

Zone	Lumens	% of Luminaire
0-40	4680	35.0%
0-60	8517	63.6%
0-90	12308	91.9%
90-180	1087	8.1%



Candela Tabulation
Horizontal Angle (Degrees)

Vertical Angle (Degrees)	0	22.5	45	67.5	90	112.5	135	157.5	180	202.5	225	247.5	270	292.5	315	337.5
	0	3673	3673	3673	3673	3673	3673	3673	3673	3673	3673	3673	3673	3673	3673	3673
	5	3658	3650	3653	3644	3649	3644	3653	3650	3658	3650	3653	3644	3649	3644	3653
	10	3595	3588	3605	3607	3615	3607	3605	3588	3595	3588	3605	3607	3615	3607	3605
	15	3504	3501	3523	3542	3561	3542	3523	3501	3504	3501	3523	3542	3561	3542	3523
	20	3377	3383	3417	3431	3444	3431	3417	3383	3377	3383	3417	3431	3444	3431	3417
	25	3218	3225	3270	3302	3329	3302	3270	3225	3218	3225	3270	3302	3329	3302	3270
	30	3032	3044	3101	3153	3186	3153	3101	3044	3032	3044	3101	3153	3186	3153	3101
	35	2826	2846	2922	3003	3050	3003	2922	2846	2826	2846	2922	3003	3050	3003	2922
	40	2606	2636	2730	2835	2892	2835	2730	2636	2606	2636	2730	2835	2892	2835	2730
	45	2370	2408	2525	2660	2723	2660	2525	2408	2370	2408	2525	2660	2723	2660	2525
	50	2115	2162	2317	2480	2555	2480	2317	2162	2115	2162	2317	2480	2555	2480	2317
	55	1856	1909	2099	2286	2362	2286	2099	1909	1856	1909	2099	2286	2362	2286	2099
	60	1590	1655	1875	2076	2158	2076	1875	1655	1590	1655	1875	2076	2158	2076	1875
	65	1325	1409	1655	1868	1947	1868	1655	1409	1325	1409	1655	1868	1947	1868	1655
	70	1052	1169	1440	1660	1741	1660	1440	1169	1052	1169	1440	1660	1741	1660	1440
	75	791	945	1237	1463	1539	1463	1237	945	791	945	1237	1463	1539	1463	1237
	80	537	741	1048	1268	1343	1268	1048	741	537	741	1048	1268	1343	1268	1048
	85	298	566	877	1092	1161	1092	877	566	298	566	877	1092	1161	1092	877
	90	110	414	717	922	990	922	717	414	110	414	717	922	990	922	717
	95	87	287	568	762	829	762	568	287	87	287	568	762	829	762	568
	100	67	185	435	618	684	618	435	185	67	185	435	618	684	618	435
	105	48	103	315	484	548	484	315	103	48	103	315	484	548	484	315
	110	32	40	214	367	427	367	214	40	32	40	214	367	427	367	214
	115	19	12	129	265	319	265	129	12	19	12	129	265	319	265	129
	120	7	3	63	179	225	179	63	3	7	3	63	179	225	179	63
	125	0	0	16	103	141	103	16	0	0	0	16	103	141	103	16
	130	0	0	0	41	70	41	0	0	0	0	0	41	70	41	0
	135	0	0	0	6	17	6	0	0	0	0	0	6	17	6	0
	140	0	0	0	0	0	0	0	0	0	0	0	0	0	0	0
	145	0	0	0	0	0	0	0	0	0	0	0	0	0	0	0
	150	0	0	0	0	0	0	0	0	0	0	0	0	0	0	0
	155	0	0	0	0	0	0	0	0	0	0	0	0	0	0	0
	160	0	0	0	0	0	0	0	0	0	0	0	0	0	0	0
	165	0	0	0	0	0	0	0	0	0	0	0	0	0	0	0
	170	0	0	0	0	0	0	0	0	0	0	0	0	0	0	0
	175	0	0	0	0	0	0	0	0	0	0	0	0	0	0	0
	180	0	0	0	0	0	0	0	0	0	0	0	0	0	0	0

Average Luminance (cd/m²)
Horizontal Angle (Degrees)

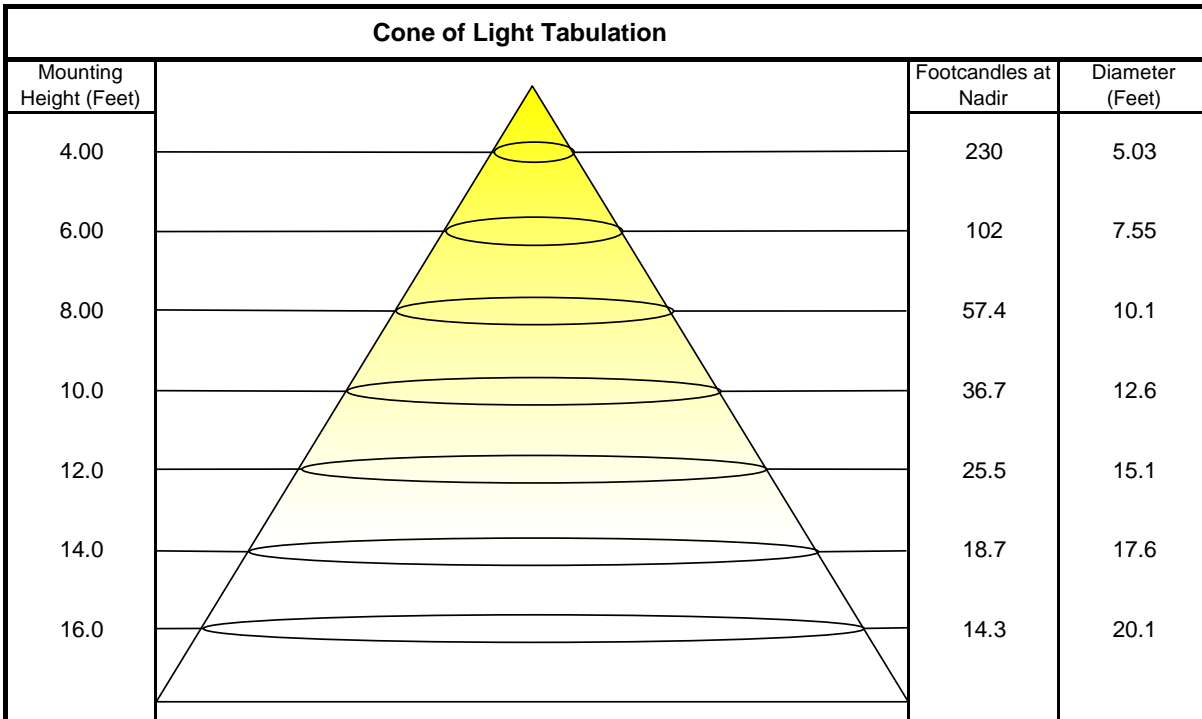
Vertical Angle (Degrees)	0	45	90
	0	16170	16170
	45	14110	13560
	55	13380	13360
	65	12580	13210
	75	11510	13540
	85	9916	15210



Coefficients of Utilization - Zonal Cavity Method

Effective Floor Cavity Reflectance 20%																		
Ceiling Cavity Reflectance	80				70				50			30			10			0
Wall Reflectance	70	50	30	10	70	50	30	10	50	30	10	50	30	10	50	30	10	0
Room Cavity Ratio (RCR)	** Values are expressed as percent of total lumen output delivered to the task surface **																	
0	117	117	117	117	113	113	113	113	107	107	107	100	100	100	95	95	95	92
1	104	99	93	89	101	95	91	86	90	86	82	84	81	78	79	77	74	72
2	94	85	77	70	90	82	75	69	77	71	66	72	68	63	68	64	61	58
3	85	74	65	58	82	71	63	56	67	60	54	63	57	52	60	55	50	48
4	78	65	55	48	75	63	54	47	59	52	46	56	50	44	53	47	43	40
5	71	58	48	41	69	56	47	41	53	45	39	50	43	38	47	42	37	35
6	66	52	42	36	63	50	42	35	48	40	34	45	38	33	43	37	32	30
7	61	47	38	31	59	46	37	31	43	36	30	41	34	29	39	33	29	26
8	57	43	34	28	55	42	33	27	40	32	27	38	31	26	36	30	25	23
9	53	39	31	25	51	38	30	25	36	29	24	35	28	23	33	27	23	21
10	49	36	28	22	48	35	27	22	34	27	22	32	26	21	31	25	21	19

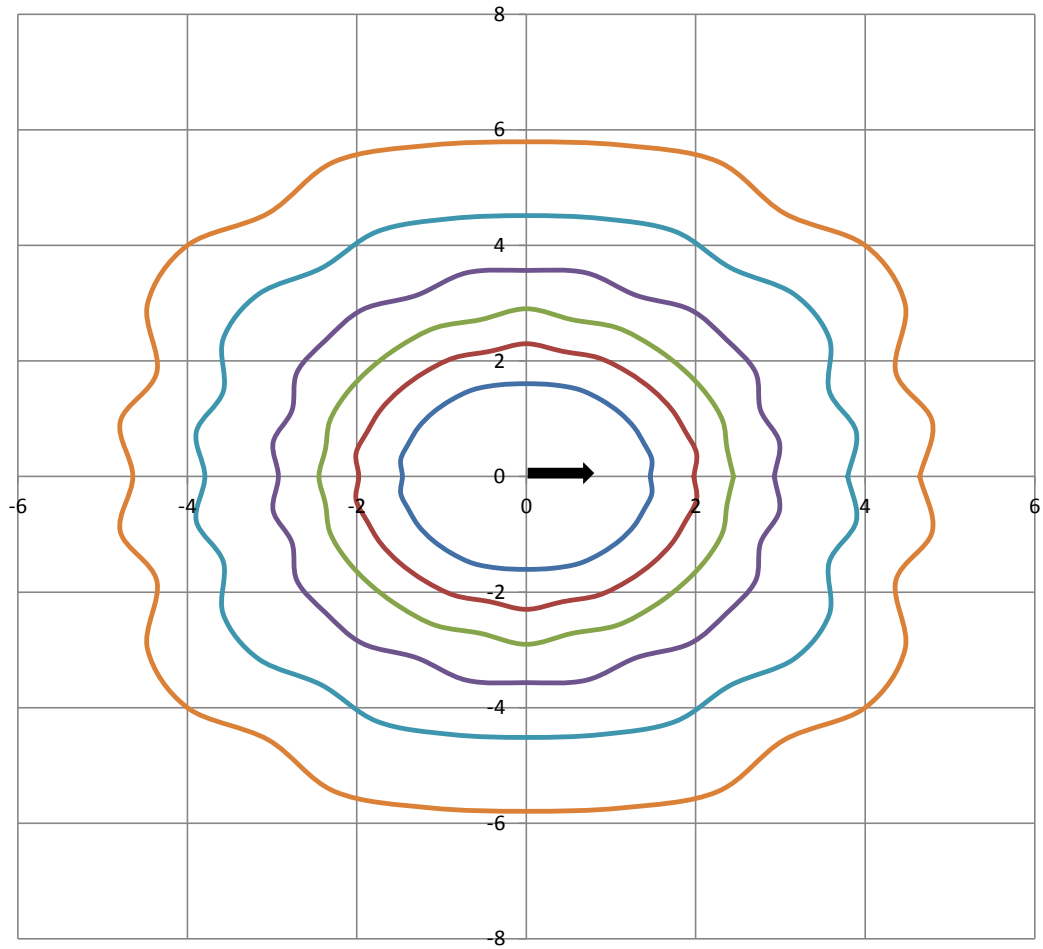
Beam and Field Information	
CIE Type:	Direct
Center Beam Intensity:	3673 Candela
Central Cone Intensity:	3664 Candela
Beam Flux:	8779.5 Lumens
Beam Angle (0-180):	110.8 Degrees
Beam Angle (90-270):	135.3 Degrees
Field Angle (0-180):	167.1 Degrees
Field Angle (90-270):	225.3 Degrees





ISOFootcandle Plot

Mounting Height - 8 Feet



Grid Lines in Units of Mounting Height

5 fc 2 fc 1 fc 0.5 fc 0.2 fc 0.1 fc